

## THE NEW EMIX...EC & EMIX...M

Silent and powerful, the optimum combination



**EMIX...EC**

■ with highly efficient EC motor



**EMIX...M**

■ with 3-step AC motor

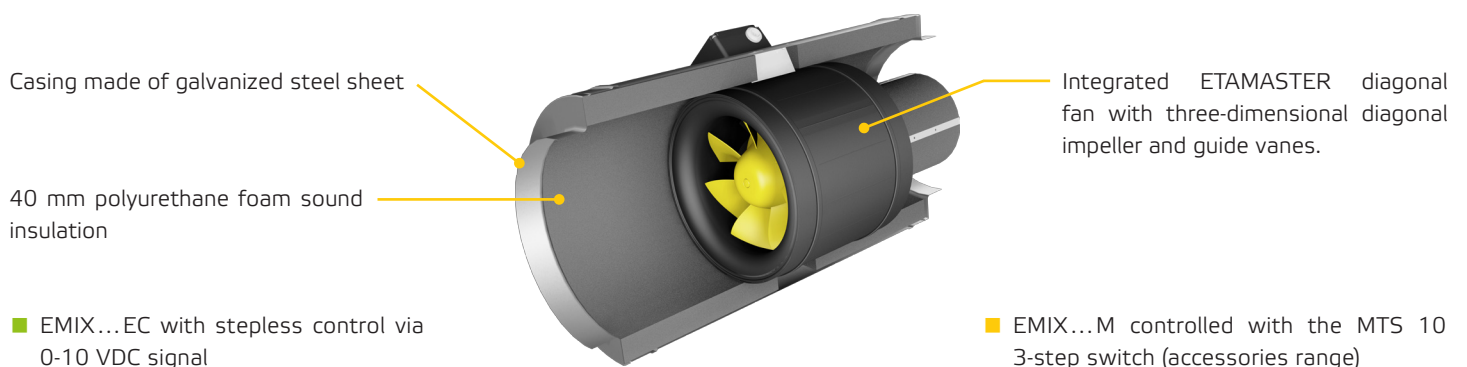
The EMIX series covers the requirements for highest efficiency and silent operation. Recommended applications include meeting rooms, classrooms, public offices, stores a.m.

The high efficiency rates, which exceed the current requirements, in force from 1 January 2018, are achieved by the built-in ETAMASTER diagonal fans. Dynamic pressure is transformed into static pressure, which minimizes flow losses.

The two new EMIX...EC and EMIX...M series are designed to cover applications with an airflow rate of up to 3200 m<sup>3</sup>/h.

### The types:

Nr.	Description	ID	Max. air flow	Nr.	Description	ID	Max. air flow
1	EMIX 150L EC 11	139599	660 m <sup>3</sup> /h	1	EMIX 150L E2M 11	139567	560 m <sup>3</sup> /h
2	EMIX 160L EC 11	139600	700 m <sup>3</sup> /h	2	EMIX 160L E2M 11	139571	560 m <sup>3</sup> /h
3	EMIX 200 EC 11	139602	1200 m <sup>3</sup> /h	3	EMIX 200 E2M 11	139589	1120 m <sup>3</sup> /h
4	EMIX 250 EC 11	139609	2130 m <sup>3</sup> /h	4	EMIX 250 E2M 11	139590	1590 m <sup>3</sup> /h
5	EMIX 315 EC 11	139615	2860 m <sup>3</sup> /h	5	EMIX 315 E2M 11	139593	3015 m <sup>3</sup> /h
6	EMIX 355 EC 11	139619	3230 m <sup>3</sup> /h	6	EMIX 400 E4M 11	139595	3240 m <sup>3</sup> /h



**EMIX...M - cross section**